

CSRA EOA, INC.
RICHMOND COUNTY DISTRICTS
2022

10/17/2022 Richmond County Districts Board Approved
CSRA Economic Opportunity Authority, Inc. Augusta, GA

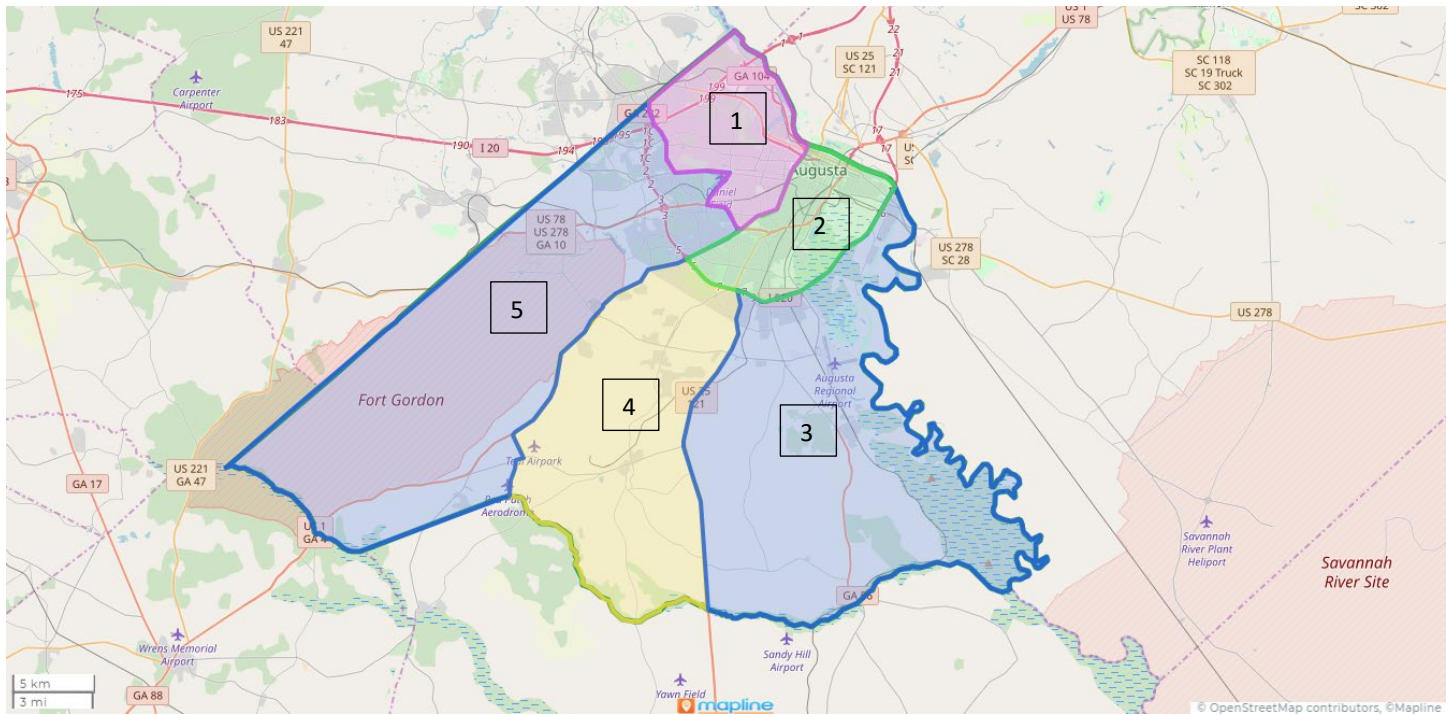
Contents

Purpose	2
Five (5) Richmond County Districts.....	2
Demographics Data.....	2
District 1 West Augusta/Harrisburg.....	3
District 2 Downtown Augusta	4
District 3 East Augusta/Richmond County.....	5
District 4 South Augusta/South Richmond County.....	6
District 5 Fort Gordon/Barton Chapel	7

Purpose

This document includes the Richmond County, Georgia 5-District map, Census Data, and individual district maps with boundary descriptions for the CSRA Economic Opportunity Authority, Inc. These districts were adopted on 10/17/2022 as a result of an intensive review of the changes in population for those living in poverty across the county over the past 15-20 year. To ensure that we remain current in providing representation of the low-income (financially impoverished) population, these districts will be reviewed every 10 years after data has been released at the block group level through the decennial census (US Census). Census/ACS 5-Year 2016-2020 data (most current available with accurate numbers for all census tracts in Richmond County) was used to chart population, poverty rates and numbers in poverty in Richmond County.

Five (5) Richmond County Districts

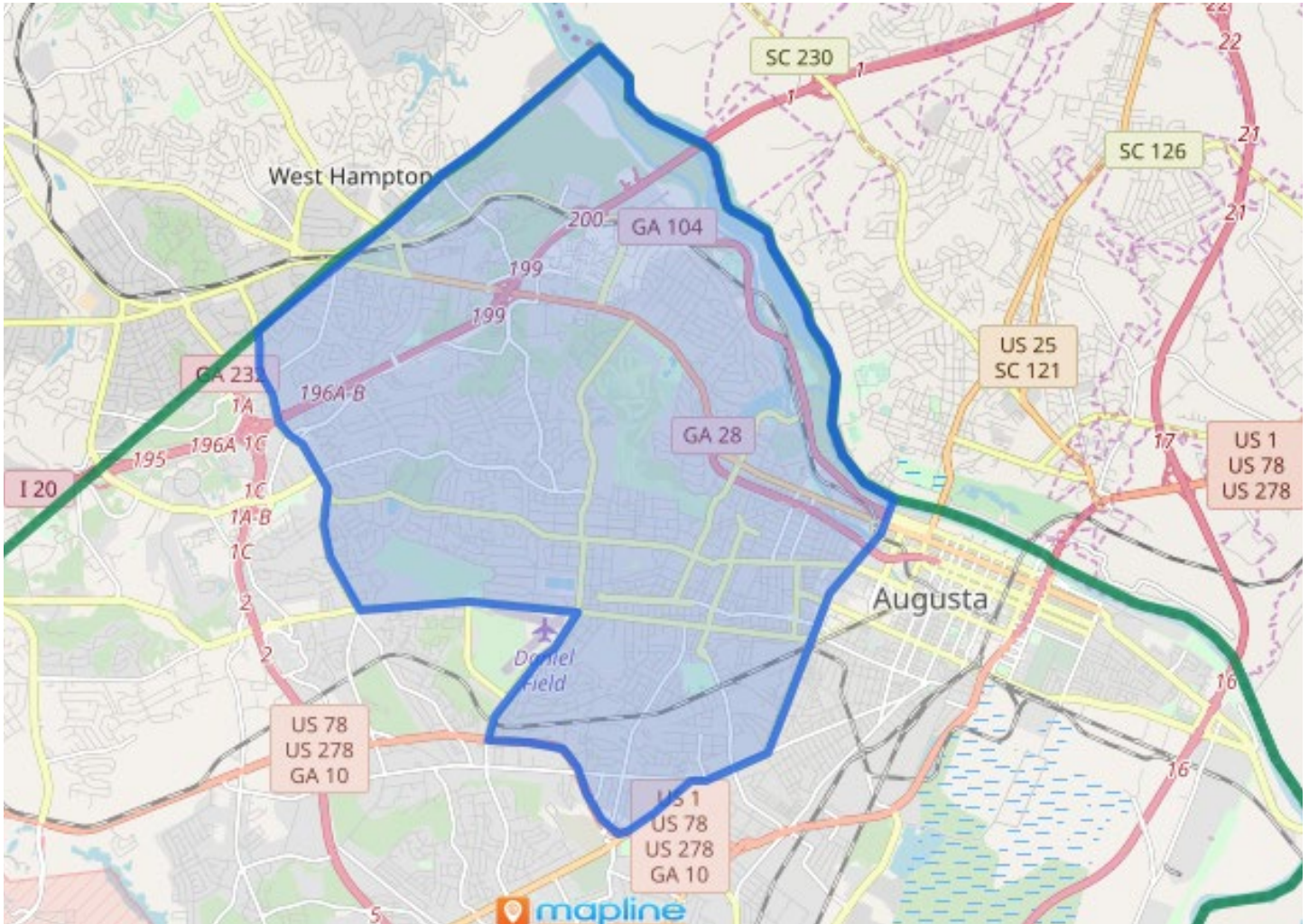


Demographics Data

District	Avg Hh Income	Population	Number in poverty	Percent in Poverty	Under 5 in poverty	Number 125% Poverty
District 1	\$54,709	56,076	11,955	21%	1,146	14,949
District 2	\$53,114	35,476	6,007	17%	873	8,231
District 3	\$55,095	24,330	6,705	28%	815	8,116
District 4	\$64,624	51,604	10,220	20%	1,101	12,564
District 5	\$37,046	24,880	9,733	39%	1,343	11,269
Totals		192,366	44,620		5,278	55,129

District 1 West Augusta/Harrisburg

Mapped Area

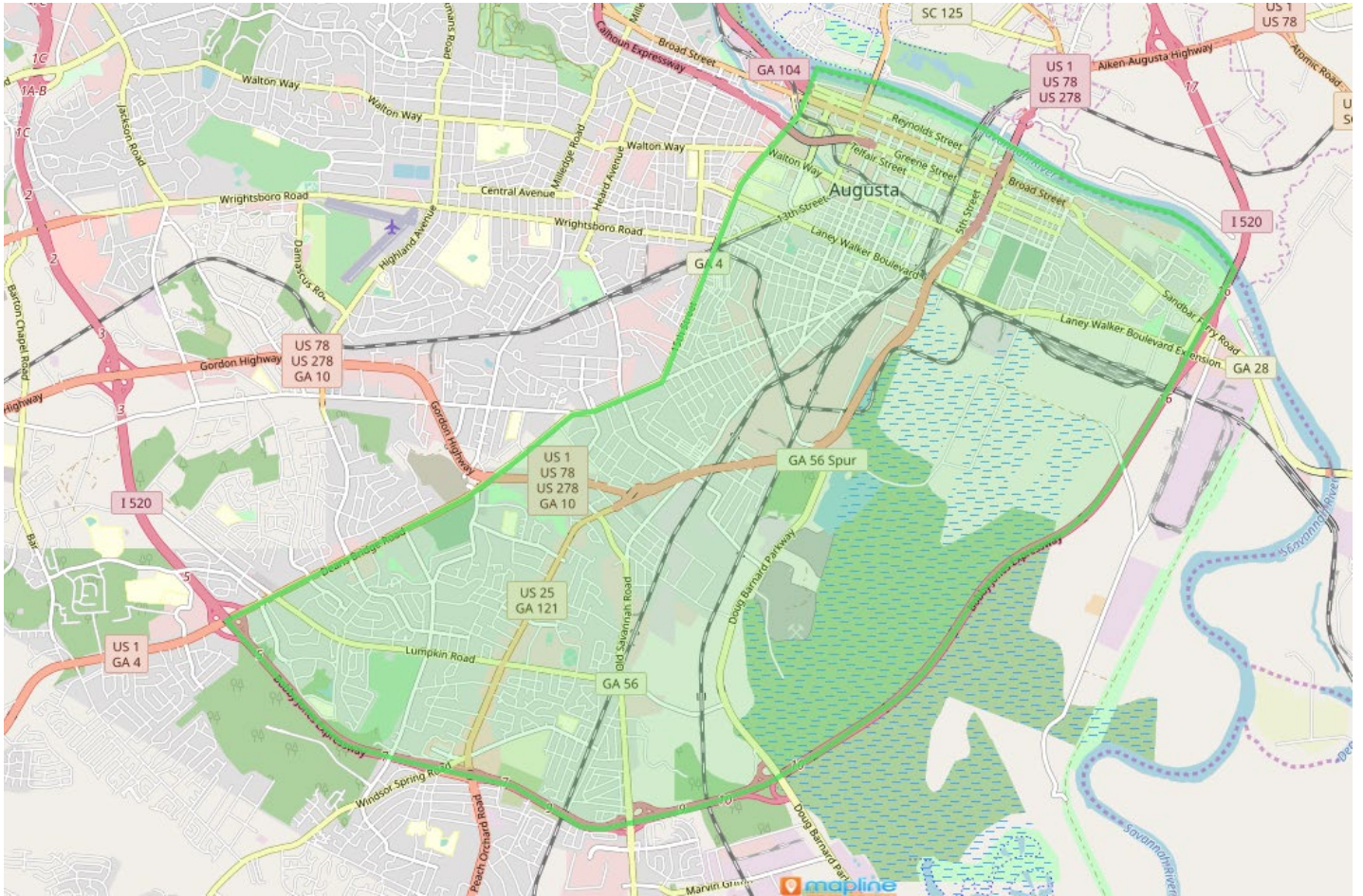


Boundaries

- Richmond County Line from Davis Road to the Savannah River.
- The Savannah River from the North corner of the Richmond County Line to 15th Street.
- 15th Street to Milledgeville Road/Martin Luther King Jr. Boulevard.
- Martin Luther King Jr. Boulevard/Milledgeville Road to Deans Bridge Road.
- Southwest along Deans Bridge Road to Gordon Highway.
- Gordon Highway westward to Wheeler Road/Highland Avenue.
- Highland Avenue northward to Wrightsboro Road.
- Wrightsboro Road westward to Jackson Road.
- Jackson Road northward to Walton Way Extension.
- Walton Way Extension (turns into Davis Road) to the County Line.

District 2 Downtown Augusta

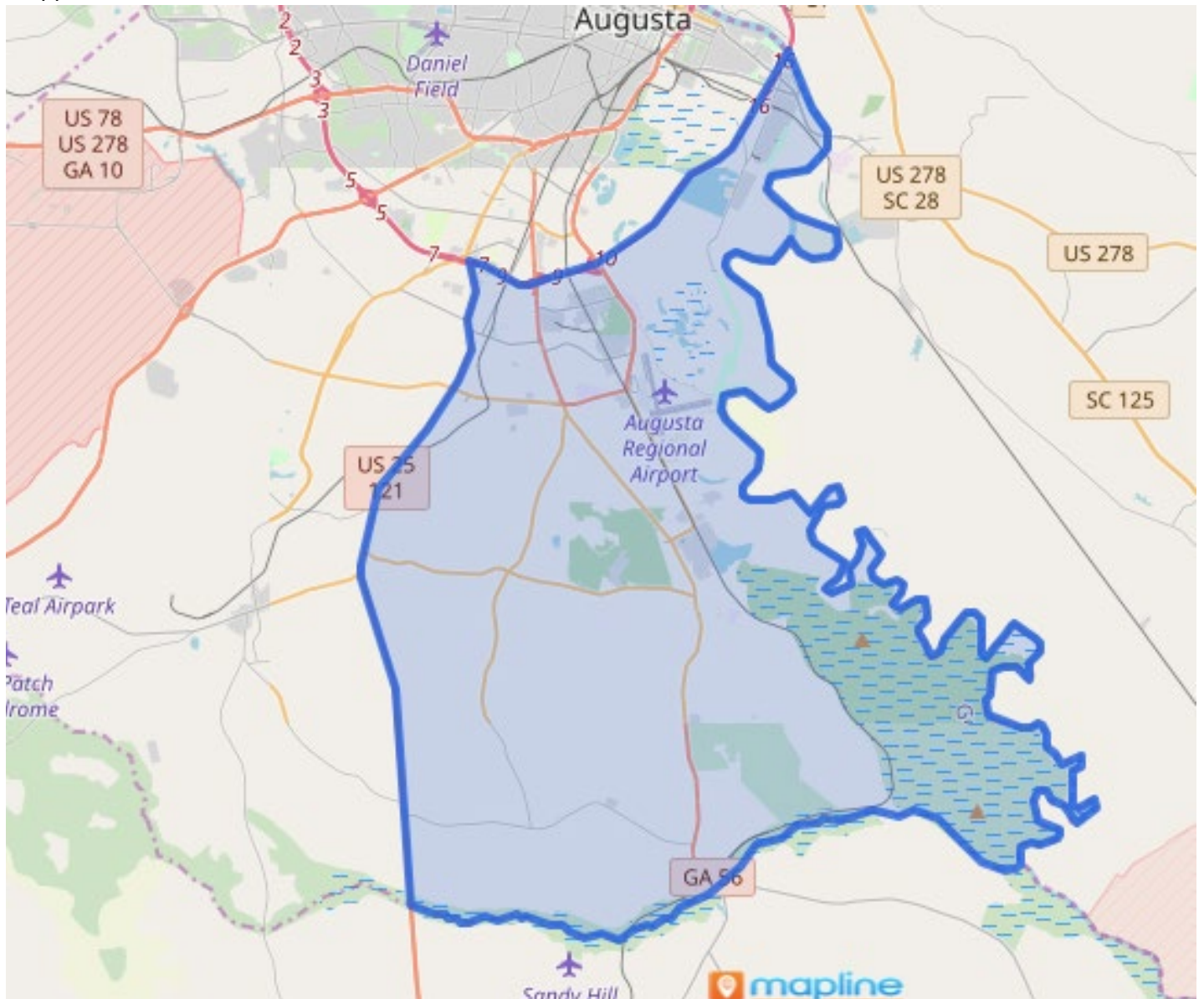
Mapped Area



Boundaries

- Savannah River from 15th Street as the Northwest corner to Bobby Jones Expressway as the Northeast border.
- Bobby Jones Expressway from the Savannah River South, then West to Deans Bridge exit.
- Deans Bridge Road from Bobby Jones Expressway to 15th Street.
- Fifteenth Street to the Savannah River.

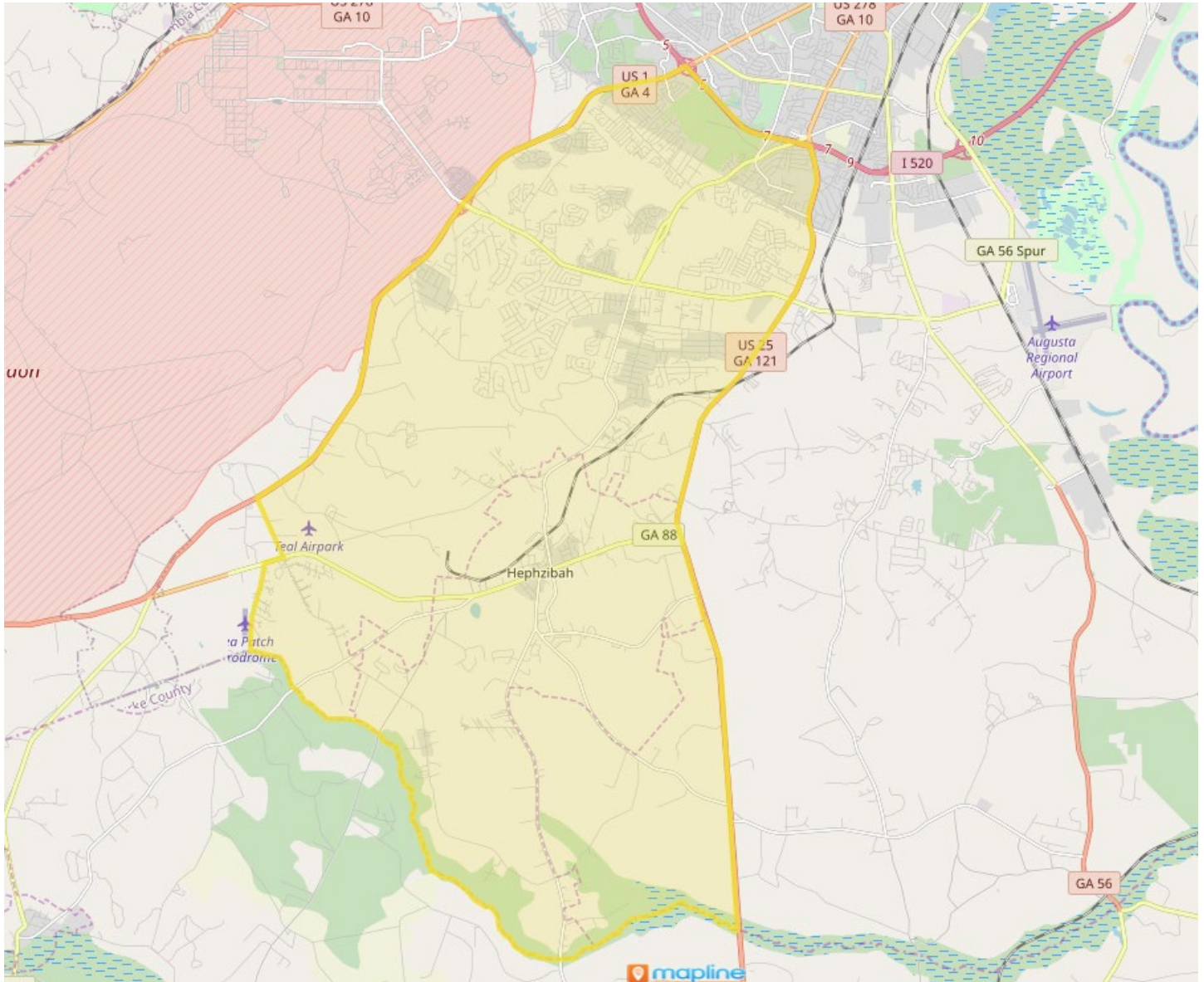
Mapped Area



Boundaries

- Savannah River from the Bobby Jones Expressway East and South along the GA/SC state line to the Richmond County/Burke County line.
- Richmond County/Burke County line from the Savannah River to Peach Orchard Road (Highway 25).
- Peach Orchard Road (Highway 25) from the Richmond County/Burke County line to the Bobby Jones Expressway.
- The Bobby Jones Expressway from Peach Orchard Road (Hwy 25) onramp to the Savannah River (GA/SC State Line).

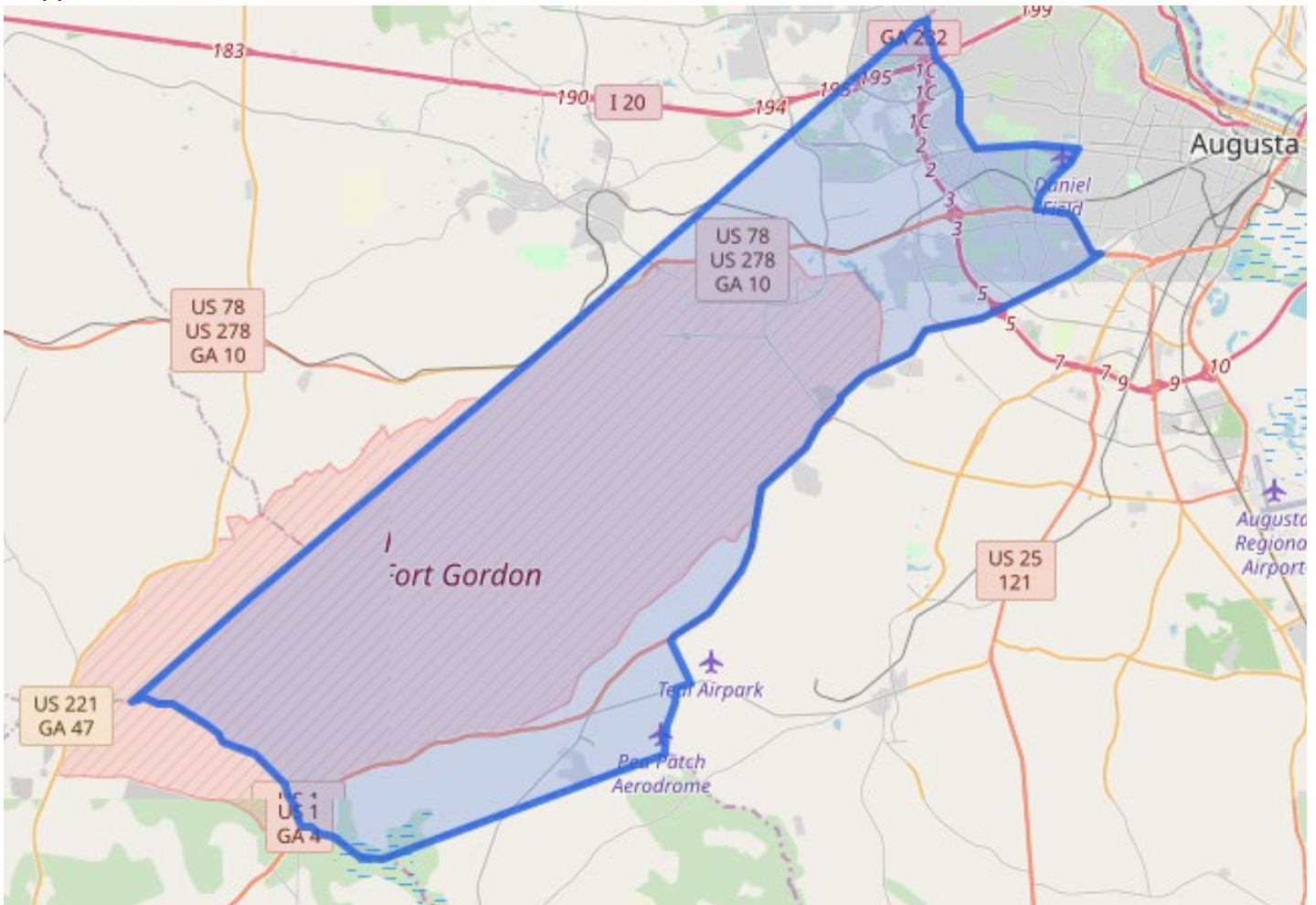
Mapped Area



Boundaries

- Bobby Jones Expressway from Deans Bridge Road eastward to Peach Orchard Road.
- Peach Orchard Road from Bobby Jones Expressway southward to the Richmond County/Burke County Line.
- The Richmond County/Burke County line from Peach Orchard road westward and northward to Boulineau Road.
- Boulineau Road from the Richmond County/Burke County line northward to GA 88.
- GA 88 from Boulineau Road eastward to Bath Edie Road.
- Bath Edie Road from GA 88 northward to Deans Bridge Road.
- Deans Bridge Road from Bath Edie Road northeastward to the Bobby Jones Expressway.

Mapped Area



Boundaries

- Davis Road/Walton Way Extension/Jackson Road from the Richmond County/Columbia County line southeastward to Wrightsboro Road.
- Wrightsboro Road from Jackson Road eastward to Highland Avenue.
- Highland Avenue from Wrightsboro Road southward to Gordon Highway.
- Gordon Highway from Highland Avenue to Deans Bridge Road.
- Deans Bridge Road from Gordon Highway southwestwardly to Bath Edie Road.
- Bath Edie Road from Deans Bridge to Highway 88.
- Highway 88 from Bath Edie Road to Boulineau Road.
- Boulineau Road from Highway 88 to the Richmond County/Burke County Line.
- The Richmond County/Burke County line westward to the Richmond County/Jefferson County Line.
- The Richmond County/Jefferson County Line to the Richmond County/McDuffie County Line.
- Follow the Richmond County/McDuffie County Line and continue along that line as it changes to the Richmond County/Columbia County Line up to Davis Road.